

Settings For FMM Study Tools

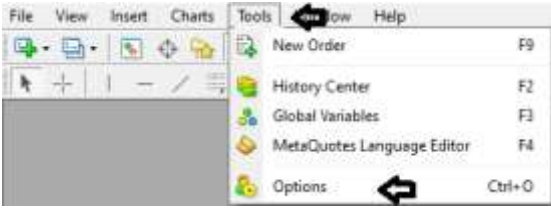
Thank you for installing Forex Master Mind Study Tools.

Table of Contents

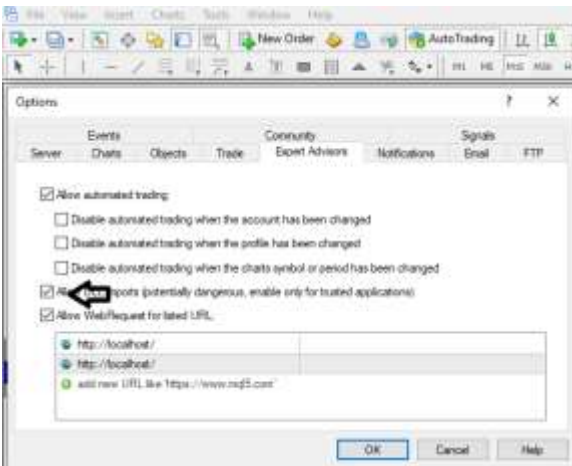
1. Installation
2. Allow DLL's
3. Refresh Indicators List
4. Create a New Chart
5. Adding FMM Study Tools to Chart
6. Show Grid
7. Change Grid Color
8. Price Label
9. Adding Bold Blue and Bold Red Lines
10. Time and Price Tool
11. S90 Tool
12. Manual CC Tool
13. Parallelogram Tool
14. Automatic CC Tool
15. Gap Marking Tool
16. Buttons (Description and Use)

Settings For FMM Study Tools

After installation is complete, open MT4 platform and go to “Tools-->Options”



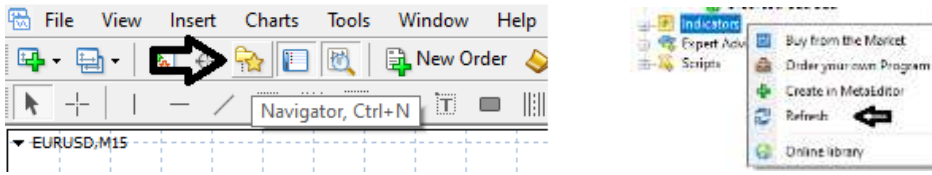
Then click the “Expert Advisors Tab”, check the box “Allow DLL imports”, click “OK”.



RISK DISCLOSURE: Trading the Forex is risky and margins may be lost. Never trade the Forex or any commodity if a loss could alter your financial lifestyle. There are no guarantees in any market. Caution for each trade entry is encouraged. Proper management of stops and limits are suggested on any trade.

Settings For FMM Study Tools

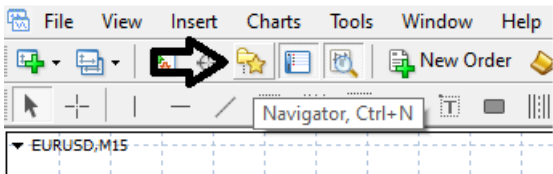
Next you want to click on “Navigator” then right click on “Indicators” and then select “Refresh”. After the Indicators list is refreshed, click the “+” beside the “Indicators” and there will be a FMMTools folder. Click the “+” beside that.



Next go to “Create a new chart”, doesn’t matter the pair or timeframe.



With this new chart open, click on “Navigator”.



After opening Navigator, right click on FMMStudyTools. Choose “Attach to a chart”

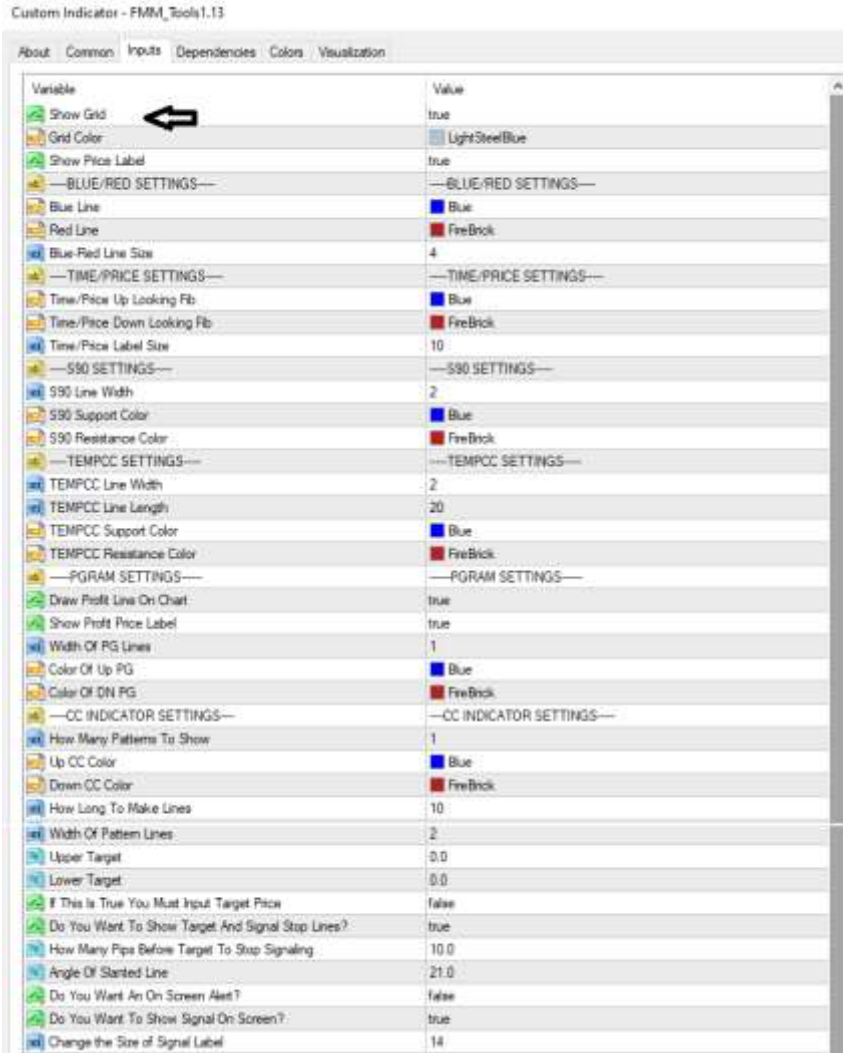


Settings For FMM Study Tools

The Indicator settings window will open. Go to “Inputs” to the right of “Common”.

Here you can change some settings of these Study Tools to look as you want on the chart.

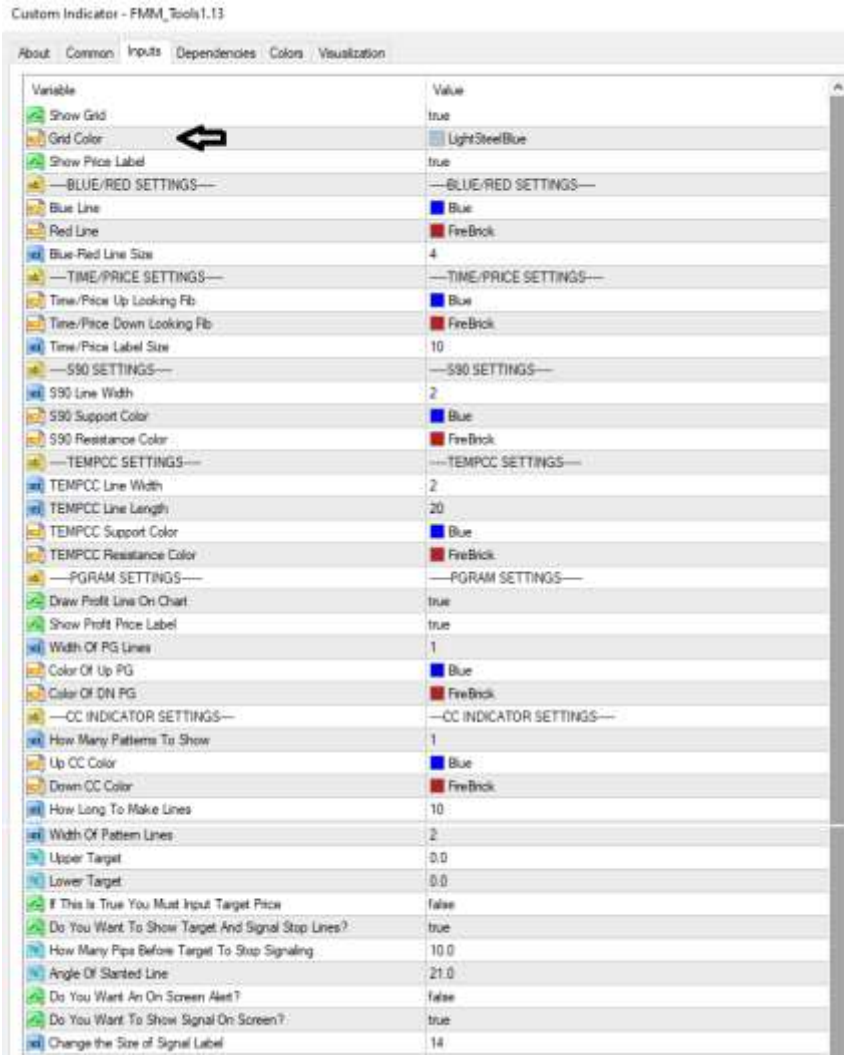
Show Grid? Do you want to see a grid on your chart? True or False



Continue on Next Page...

Settings For FMM Study Tools

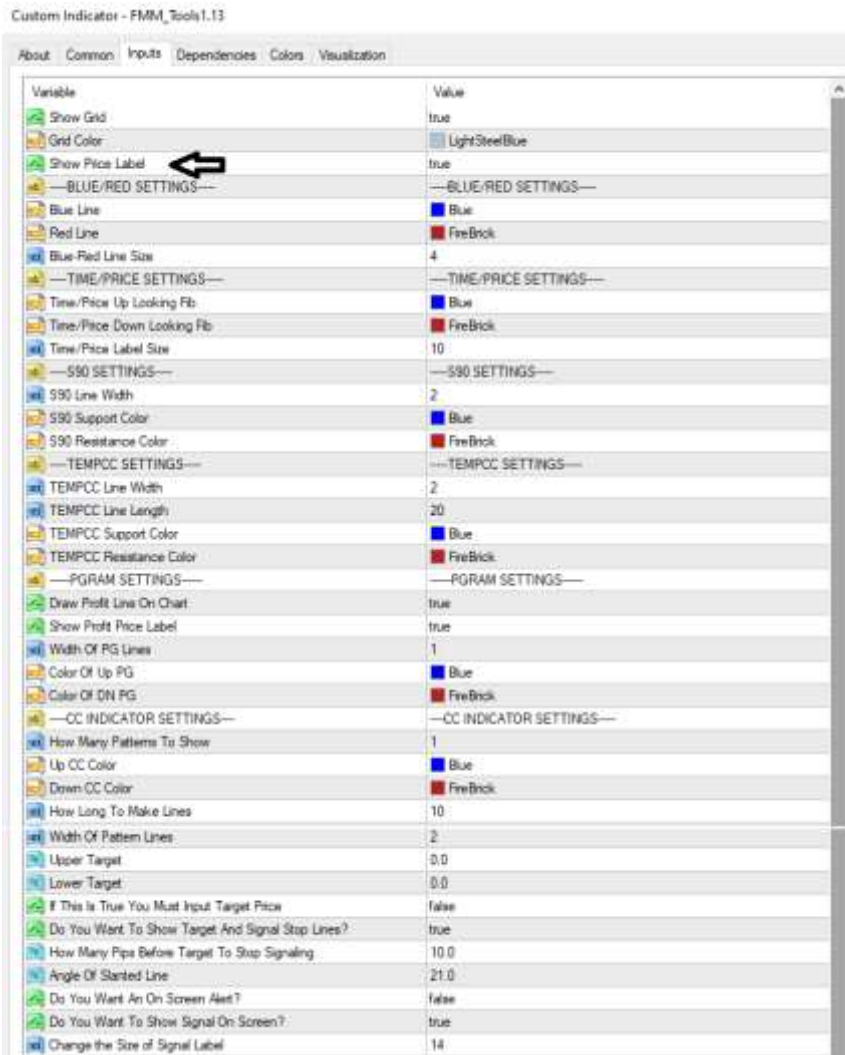
If you choose to show the Grid, you can select the color of it here.



Continue on Next Page...

Settings For FMM Study Tools

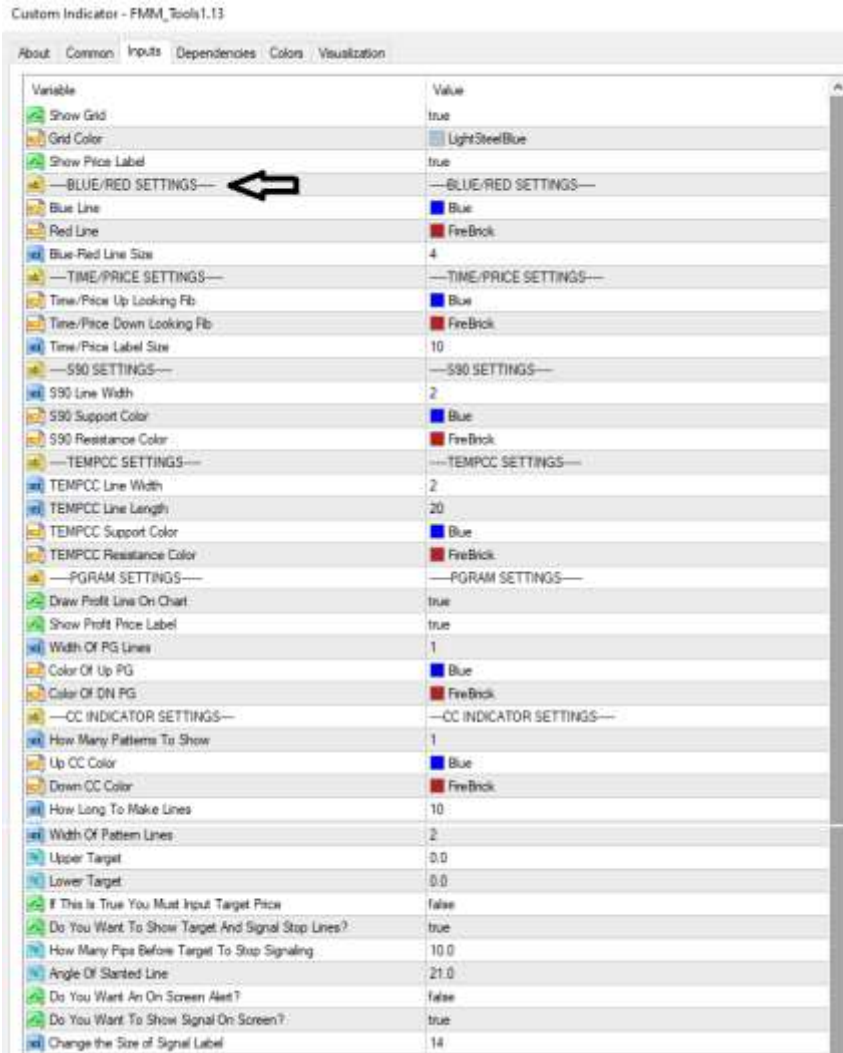
Do you want to see Price label? This will show the price at the mouse pointer. This is true or false.



Continue on Next Page...

Settings For FMM Study Tools

Bold Blue and Bold Red Line Settings Section: These three settings are for color and line width.

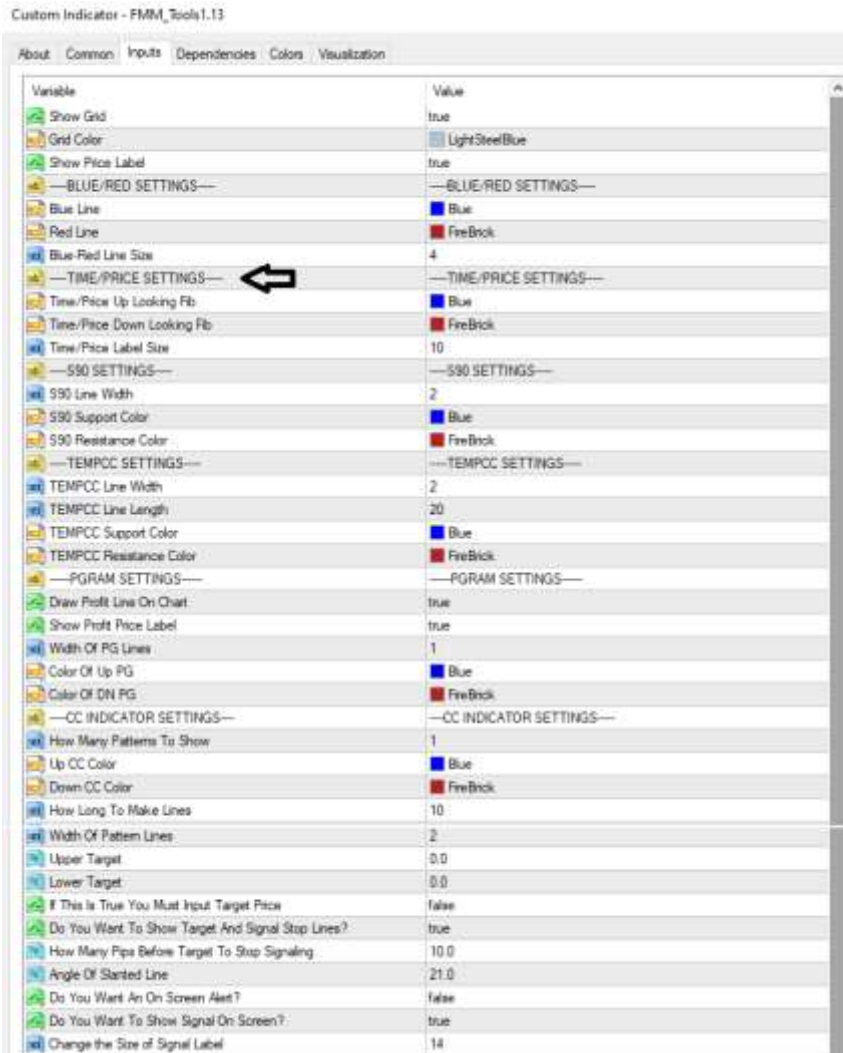


Continue on Next Page...

RISK DISCLOSURE: Trading the Forex is risky and margins may be lost. Never trade the Forex or any commodity if a loss could alter your financial lifestyle. There are no guarantees in any market. Caution for each trade entry is encouraged. Proper management of stops and limits are suggested on any trade.

Settings For FMM Study Tools

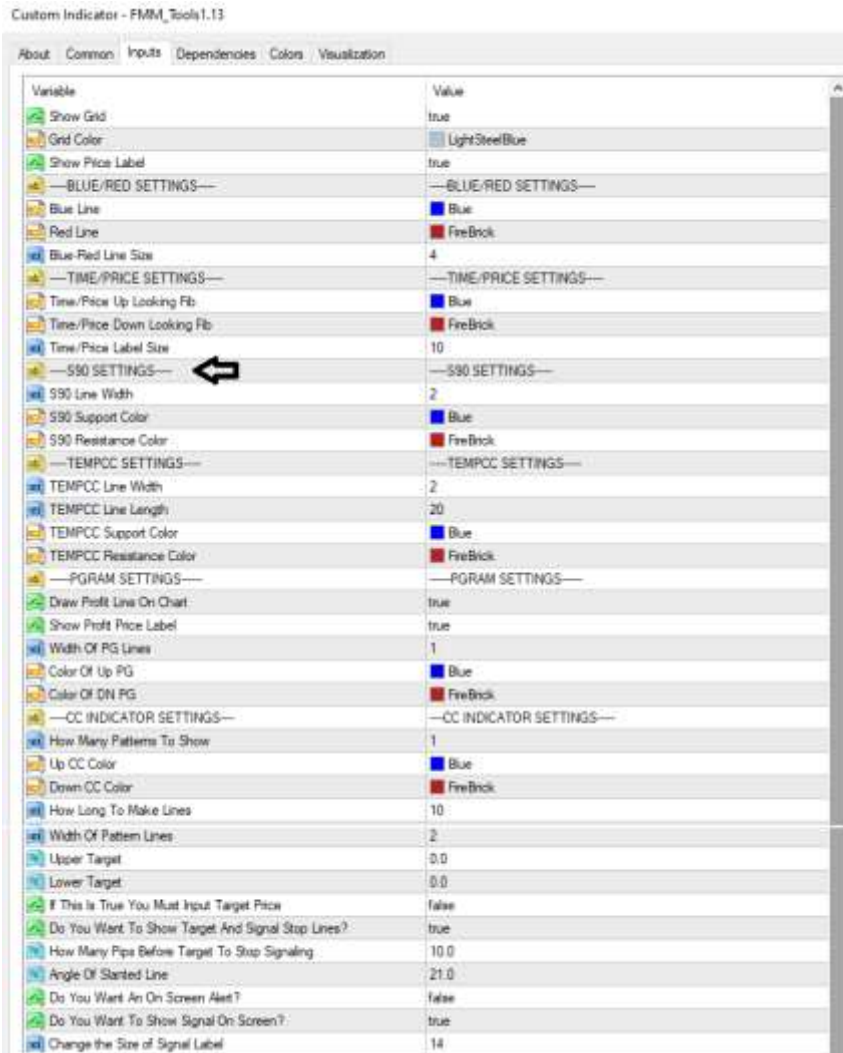
Time & Price Settings Section: You can choose the Colors of Up-Looking Fib and Down-Looking Fib and also Font Size in label.



Continue on Next Page...

Settings For FMM Study Tools

S90 Setting Section: You can choose the Support and Resistance color and you can change the width of the lines that are drawn on the chart.

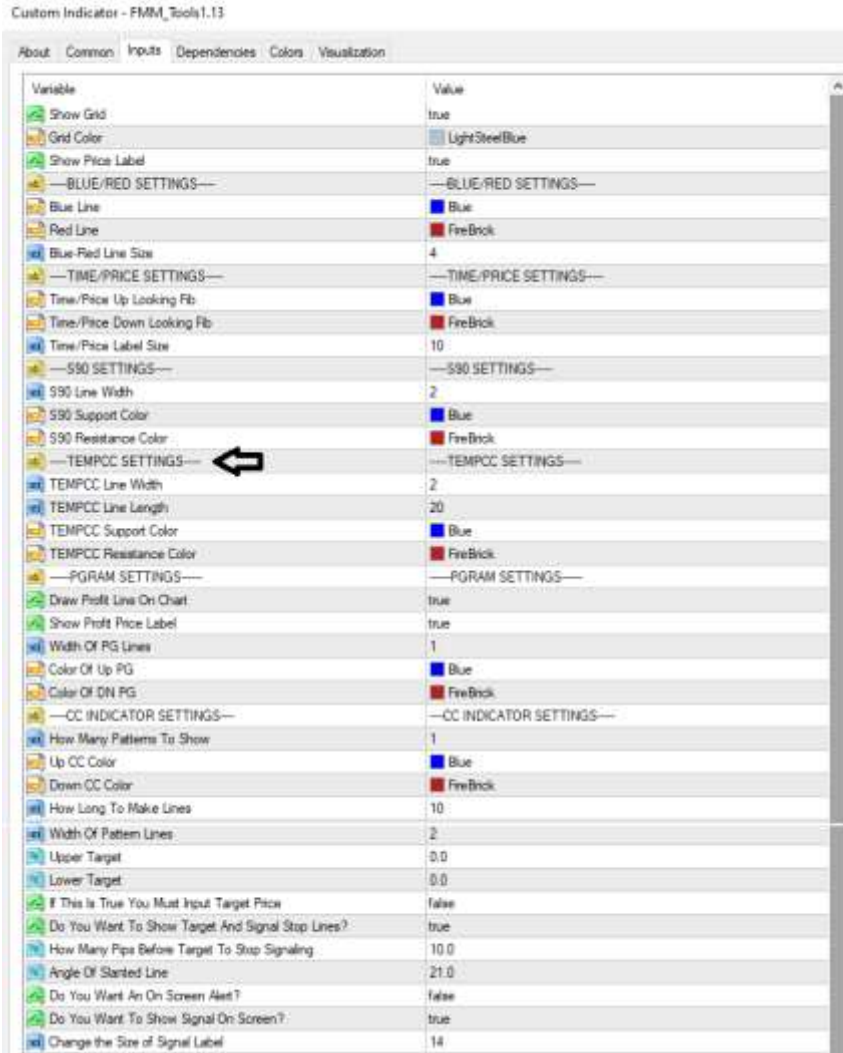


Continue on Next Page...

RISK DISCLOSURE: Trading the Forex is risky and margins may be lost. Never trade the Forex or any commodity if a loss could alter your financial lifestyle. There are no guarantees in any market. Caution for each trade entry is encouraged. Proper management of stops and limits are suggested on any trade.

Settings For FMM Study Tools

Temporary CC Settings Section: CC tool for marking CC occurrences for later reference. Here you can choose Support and Resistance colors, line width, and length of the CC pattern that is drawn on your chart. This will work on 15min, 30min, and 1hr charts.



Continue on Next Page...

RISK DISCLOSURE: Trading the Forex is risky and margins may be lost. Never trade the Forex or any commodity if a loss could alter your financial lifestyle. There are no guarantees in any market. Caution for each trade entry is encouraged. Proper management of stops and limits are suggested on any trade.

Settings For FMM Study Tools

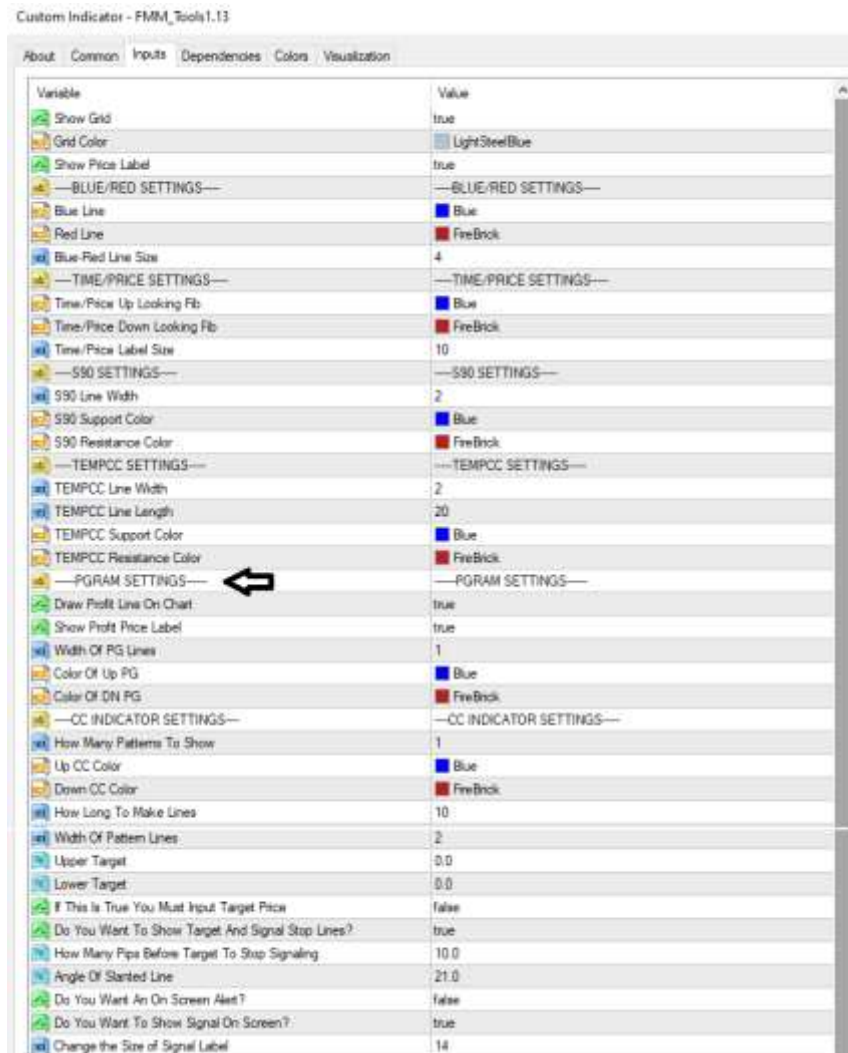
PGRAM (Parallelogram) Section:

“Draw Profit Line on Chart” Set to true if you want to have a line drawn at the end of the PG.

“Show Profit Price Label” Set to True if you want to see the target price at the end of the PG.

“Width of PG Lines” You can change the width of the lines that are drawn on the chart.

You can change the color of Up PG and Down PG.



Continue on Next Page...

Settings For FMM Study Tools

CC Tools Settings Section:

- 1) Choose the color of the Up CC and the Down CC.
- 2) Choose the length you want the lines to be.
- 3) Choose the thickness of the lines.

If you have an upper or lower target to trade to, you can enter them here.

“If This Is True You Must Input Target Price”... If this is set to True you MUST set upper or lower target for CC Indi to show CC Pattern on chart.

“Do You Want to Show Target and Signal Stop Lines”... Set to True to show Horizontal lines on chart where the target is and the point where no signal will be given.

“Angle of Slanted Line”... Here you can change the slope of the angled line of the CC Pattern.

“Do You Want an On Screen Alert”... Set this to true if you want the alert window to Pop-Up.

“Do You Want To Show Signal on Screen”... “CC Up” or “CC Down” will show on chart screen if set to true.

Lastly you can change the font size of the label.

(View of Location on Next Page)

Settings For FMM Study Tools

Custom Indicator - FMM_Tools1.13

About Common Inputs Dependencies Colors Visualization

Variable	Value
Show Grid	true
Grid Color	LightSteelBlue
Show Price Label	true
---BLUE/RED SETTINGS---	---BLUE/RED SETTINGS---
Blue Line	Blue
Red Line	FireBrick
Blue-Red Line Size	4
---TIME/PRICE SETTINGS---	---TIME/PRICE SETTINGS---
Time/Price Up Looking Fib	Blue
Time/Price Down Looking Fib	FireBrick
Time/Price Label Size	10
---S90 SETTINGS---	---S90 SETTINGS---
S90 Line Width	2
S90 Support Color	Blue
S90 Resistance Color	FireBrick
---TEMPCC SETTINGS---	---TEMPCC SETTINGS---
TEMPCC Line Width	2
TEMPCC Line Length	20
TEMPCC Support Color	Blue
TEMPCC Resistance Color	FireBrick
---PGRAM SETTINGS---	---PGRAM SETTINGS---
Draw Profit Line On Chart	true
Show Profit Price Label	true
Width Of PG Lines	1
Color Of Up PG	Blue
Color Of DN PG	FireBrick
---CC INDICATOR SETTINGS---	---CC INDICATOR SETTINGS---
How Many Patterns To Show	1
Up CC Color	Blue
Down CC Color	FireBrick
How Long To Make Lines	10
Width Of Pattern Lines	2
Upper Target	0.0
Lower Target	0.0
If This Is True You Must Input Target Price	false
Do You Want To Show Target And Signal Stop Lines?	true
How Many Pips Before Target To Stop Signaling	10.0
Angle Of Stanted Line	21.0
Do You Want An On Screen Alert?	false
Do You Want To Show Signal On Screen?	true
Change the Size of Signal Label	14

Continue on Next Page...

RISK DISCLOSURE: Trading the Forex is risky and margins may be lost. Never trade the Forex or any commodity if a loss could alter your financial lifestyle. There are no guarantees in any market. Caution for each trade entry is encouraged. Proper management of stops and limits are suggested on any trade.

Settings For FMM Study Tools

Gap Marker Settings Section:

“gap_pips”—Any Gap in the market exceeding this number will be shown on the chart.

You can change the color of Gap Up and Gap Down.



After you have your settings as you like, click OK.



You are now ready to start using the tools on this chart.

You will see FMMStudyTools on your chart. If you do not see this the tools are not attached to the charts.



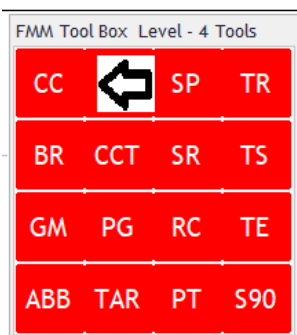
Settings For FMM Study Tools

Working the Study Tools from the Buttons

All buttons are located in a panel and are hidden until you mouse over them. This panel can be moved anywhere on the chart. The panel on other charts will go to this location as well.

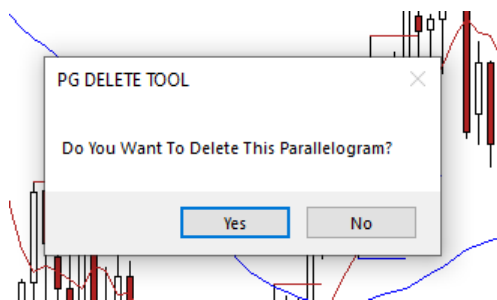
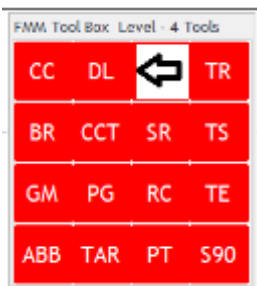
CC Button: Clear Candle (Level 1)

When the button is Green, software is looking for conditions that meet CC rules. When conditions are met, the CC lines are drawn on the chart along with a message of direction. When button is Red you will see a message on the chart telling you the CC Tool isn't running (isn't checking for conditions). Lines only show on 15 min chart, the message will show on all timeframes.



DL Button: Delete Button (Level 1)

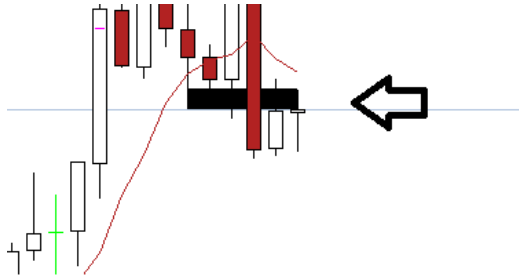
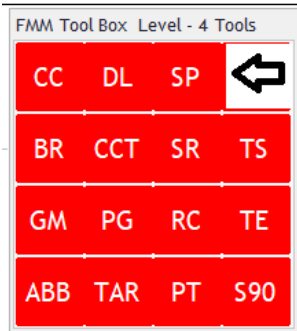
The delete button is Green until chosen, it will turn red and a message will appear on the chart that you are in "DELETE MODE". While in delete mode any object on the chart selected can be deleted, there will be a confirmation box appear before deletion.



Settings For FMM Study Tools

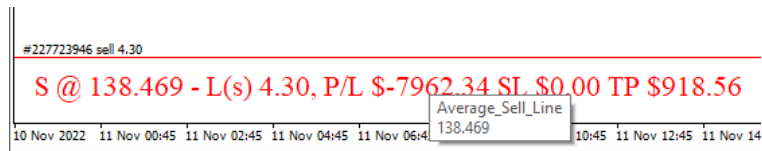
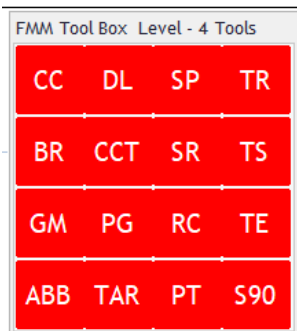
SP Button: Spread Tool (Level 1)

The button is Red and will turn Green when pressed. This will draw a small box. The bottom of the box will be the Bid price and the top of the box will be the Ask price. The prices are taken from Market Watch, these are the prices used for trade entries. The close price of the candle should always be exactly at the bottom of the box.



TR Button: Trade Report (Level 1)

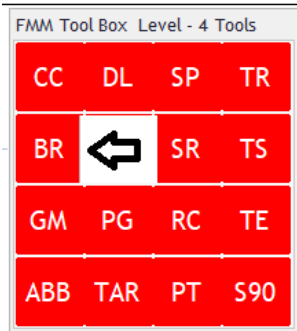
Pressing this button will display the current trade(s) open on this pair in the lower left hand. Will show profit and loss in Dollar amount, if you have TP and SL set, otherwise it will show "0". This will show running Profit or Loss on the trade(s). Will also draw a line showing where you will be in profit at.



Settings For FMM Study Tools

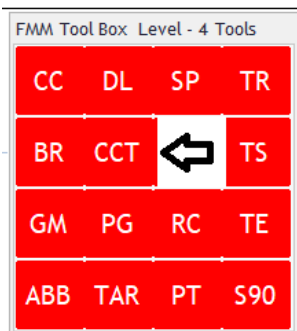
BR Button: Bold Blue and Bold Red Line Tool (Level 2)

Pressing button will turn it Green, then click on the Support or Resistance where you want to begin the bold line area. The line will automatically be Blue or Red depending if on the area clicked is Support or Resistance. The button will return to Red and be ready for the next BR line.



CCT Button: Temporary CC Drawing Tool (15min-30min-1hr only) (Level 2)

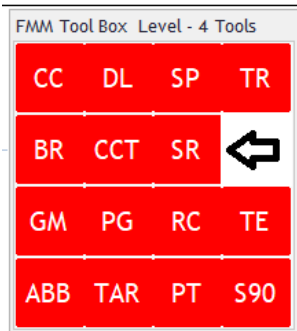
Pressing the button will turn it Green. You then click on the Support or Resistance you want the CC pattern placed. Confirmation will pop up asking to keep drawn object. Button will return to Green.



Settings For FMM Study Tools

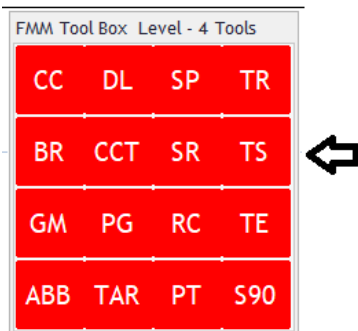
SR Button: Support & Resistance Tool (Level 2)

Button just toggles Support & Resistance to show or not to show. One difference with this tool as compared to most S/R tools, double and triple tops and bottoms are recognized with a thicker line.



TS Button: Trade String (Level 2)

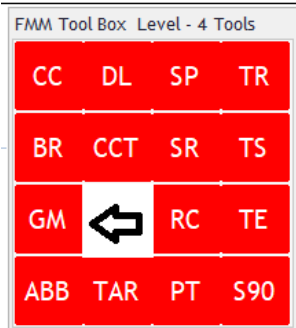
This displays the number of sequential winning trades you have mid chart.



Settings For FMM Study Tools

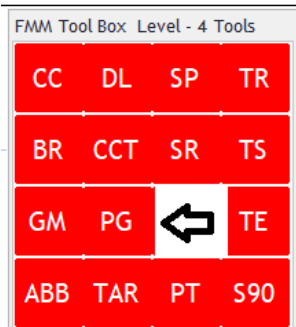
GM Button: Gap Marker Tool (Level 3)

Button just toggles Gaps to show or not to show.



PG Button: Parallelogram Drawing Tool (Level 3)

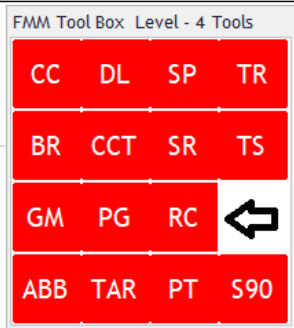
The button is Red and will turn Green when pressed. After button is Green, click the three points on the chart you wish to draw the PG. On the third click the PG will be drawn and a confirmation box will pop up asking if you want to keep this PG or not. If you choose no the PG will be erased and the PG Button will return to Red.



Settings For FMM Study Tools

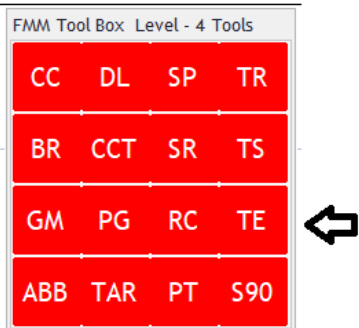
RC Button: River Cross Tool (Level 3)

Button just toggles River Cross to show or not to show.



TE Button: Target Entry Button (Level 3)

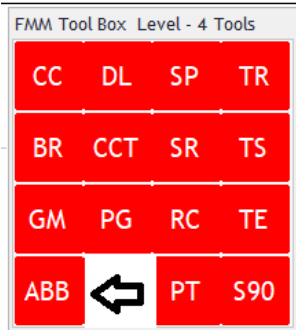
Pressing button will turn it Green, click anywhere on the chart and a target line with wings will be drawn on the current candle. The target line should be selected, right click and select "Trend Line Properties" then select "Parameters" to input price of the target in both "Value" fields. Note both "Value" fields MUST be the same price. Click ok and the Target line will move to that price and the wings will follow. You can also double click on the Target line and grab it by the center square box and move it anywhere on the chart and the wings will follow, this is for entering targets in the past.



Settings For FMM Study Tools

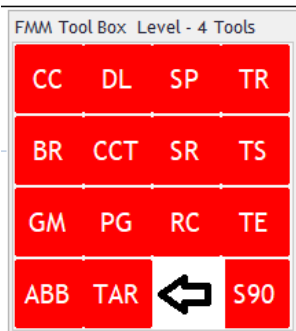
ABB Button: Auto Bold Levels Button (Level 4)

Button just toggles Bold Levels to show or not to show.



TAR Button: Auto Target Button (Automatically Draws Targets on the Chart) (Level 4)

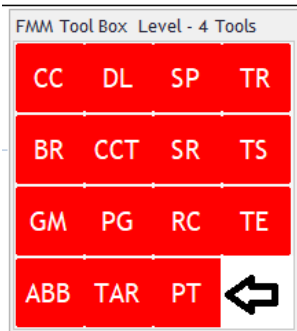
Button just toggles Targets to show or not to show.



Settings For FMM Study Tools

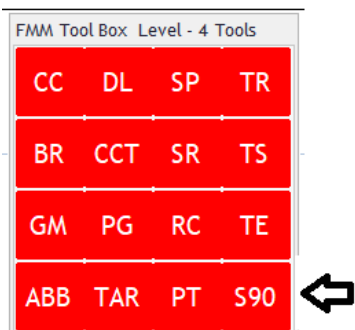
PT Button: Price Fibonacci Retracement and Extension & Time Fibonacci Extension Button (Level 4)

Pressing button will turn it Green, click on the two points you want to measure the Fibonacci. The button will stay Green, click the PT button again to remove the PT Fib.



S90 Button: S90 Marking Tool (Level 4)

Pressing button will turn it Green, then click on the Support or Resistance you find the S90. Confirmation will pop up to keep drawn object. Button will return to Green for your next S90. If the S90 has been closed you will have a confirmation box informing you the S90 is closed and will be deleted.



Settings For FMM Study Tools

Find Button:

The find button will show the main panel briefly in the event you can't find your panel. This button is static and will always be in this location.

